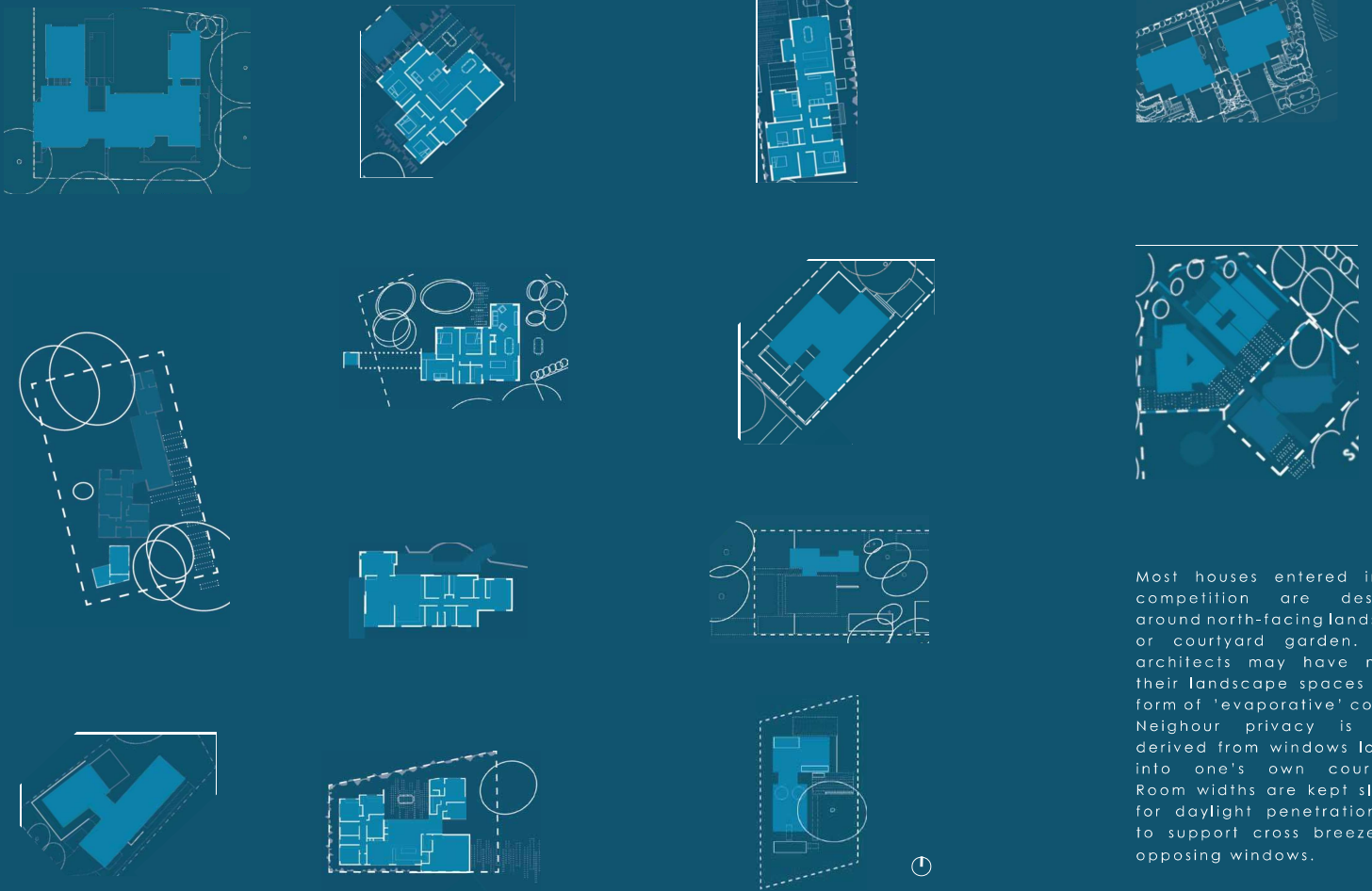
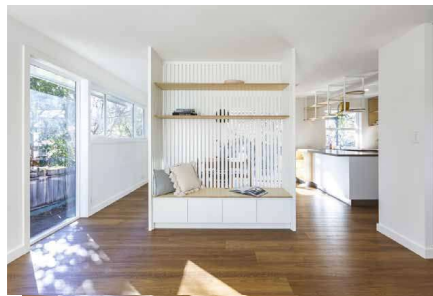


Most entries were landscape-oriented designs...



Most houses entered in the competition are designed around north-facing landscape or courtyard garden. Some architects may have misted their landscape spaces as a form of 'evaporative' cooling. Neighbour privacy is often derived from windows looking into one's own courtyard. Room widths are kept slender for daylight penetration and to support cross breezes via opposing windows.

LIGHT HOUSE ARCHITECTURE AND SCIENCE ASTON RESHUFFLE | 1 STOREY



This is a light and tight reinvigoration of a tiny 'ex-govie'. Working mainly within the original footprint, the existing external walls, roof and floor were all largely retained, as were some internal walls. We rejigged the living areas, bathroom and laundry, and extended by a mere 3m2 under the existing roofline to incorporate the backdoor nook into the living area.

It is challenging to optimise the existing footprint and minimise the size of any extensions, but this approach has led to significant financial and building material savings. We raised this dwelling from 4 to 7.7 stars. This equates to a predicted reduction in energy use of more than 65% for heating and cooling.



CANBERRA
LOW CARBON HOUSING
CHALLENGE

≥ 101%
improved

OUTSTANDING

GLOBAL WARMING POTENTIAL

